



# PIPE IDENTIFICATION



## IDENTIFY PIPES EASILY

Pipe Identification allows for improved emergency response times and a professional appearance. Brady's range of Pipe Identification products are designed in accordance with AS1345-1995 and enable quick recognition of pipe contents.

Custom Pipe Markers .....	96
Self-Sticking Pipe Markers .....	97 - 99
Roll Form Pipe Markers .....	100
Pipe Banding Tapes .....	101
Nylon Ties .....	101
Metal Write-On Tags .....	101
Valve Tags .....	102



## CUSTOM PIPE MARKERS

This Custom Pipe Markers Order Form is for the convenience of you and your authorised Brady Distributor. If you have any questions, please contact your distributor.

### 1. PIPE MARKER STYLES/DETAILS

#### COILED WRAP AROUND PIPE MARKERS (CWAP)

Outside Size Diameter of Pipe	Max. Char. Per Marker	Letter Height	Style Description	Colour Field Width
13 to 38mm	22	13mm	Size 0	200mm
44 to 63mm	13	19mm	Size I	200mm
50 to 200mm	13	32mm	Size II	300mm
High Performance High Visibility (HPHV)				
200mm & above	16	88mm	Size HPHV	600mm & Two 100mm Arrows

\*Arrows are pre-printed on all coiled wrap around pipe markers. Min. Order 5.

#### ECONOMY ROLL FORM PIPE MARKERS (ERF)

Outside Size Diameter of Pipe (Including Insulation)	Max. Char. Per Marker	Letter Height	Style Description
40 to 75mm O.D.	23	20mm	Small 31 x 380mm
Over 75mm O.D.	19	30mm	Large 57 x 380mm

\* Minimum Order of 4 rolls (50 markers per roll).



All markers except roll form pipe markers come supplied with two arrows... you cut off the arrow you don't need or, apply supplementary safety marking over the arrow you don't need. Roll form pipe markers have a perforated edge where you can remove and place arrows in the appropriate direction.

#### SELF ADHESIVE VINYL (SAV)

Outside Size Diameter of Pipe (Including Insulation)	Max. Char. Per Marker	Letter Height	Style Description
Less than 40mm O.D.†	20	7mm	Mini Wrap-Around† 10 x 100mm
40 to 75mm O.D.	23	20mm	Small 31 x 475mm
Over 75mm O.D.	19	30mm	Large 57 x 475mm
Over 250mm O.D.	20	50mm	Hi-Vis 89 x 475mm

Larger sizes available on request.

\* Min Order 1 Pack of 10.

† Miniature labels are printed 13 uncut legends per 100mm x 200mm sheet and are designed to be wrapped around pipe and/or cut to length.

#### Colour Selection Guide

Pipeline Service	Background Colour	Legend Colour
Water – Potable	Mid-Blue	White
Water	Jade Green	White
Steam	Silver-Grey	Black
Oil – Mineral, Vegetable or Animal Flammable or Combustible Liquids	Brown	White
Gases, Either Gaseous or Liquefied	Sand	Black
Acids and Alkalis	Violet	White
Air	Light Blue	White
Other Fluids, Including Drainages	Black	White
Firefighting Materials	Red	White
Electricity	Orange	White
Communications	White	Black

### 2. ORDER FORM

Style (See above)	Quantity (Min)	Size (See chart above)	Background Color (See colour selection guide)	Legend Colour (See colour selection guide)	Legend – See ordering information above for maximum character height (Include supplementary signal/symbol only if you want it printed on the body of the marker)

### 3. CONTACT DETAILS

#### Distributor Billing Location:

Company Name: \_\_\_\_\_  
 ABN: \_\_\_\_\_  
 Address: \_\_\_\_\_  
 City: \_\_\_\_\_ State: \_\_\_\_\_  
 Post Code: \_\_\_\_\_ Purchase Order No.: \_\_\_\_\_  
 Contact Name: \_\_\_\_\_  
 Phone: \_\_\_\_\_ FAX: \_\_\_\_\_

#### Distributor Shipping Location:

Name/Title: \_\_\_\_\_  
 Company Name: \_\_\_\_\_  
 Address: \_\_\_\_\_  
 City: \_\_\_\_\_ State: \_\_\_\_\_ Post Code: \_\_\_\_\_  
 Attn: \_\_\_\_\_  
 Phone: \_\_\_\_\_ FAX: \_\_\_\_\_  
 Email: \_\_\_\_\_

**FAX OR EMAIL THIS FORM TO YOUR DISTRIBUTOR**

# SELF-STICKING VINYL PIPE MARKERS

## Understanding AS 1345-1995 "Identification of the contents of pipes, conduits and ducts"

### Why Mark Pipes?

Pipe markers aid in the quick identification of a pipe's contents – especially in an emergency situation. A successful pipe identification program helps employees, contractors and emergency responders to identify a pipe's contents where there are several pipes side by side. Pipe markers also save valuable time when tracing lines are necessary during maintenance.

### Where Should Pipe Markers be Located?

AS 1345 specifies that markers be placed adjacent to all junctions, valves, service appliances, bulkhead and wall penetrations. Markers shall be spaced no more than 8m apart except for long, uninterrupted straight runs of external services where spacing shall not exceed 50m.

**Marker Design/Layout Requirements:** AS 1345 addresses several elements of pipe marker design including; Marker Layout: A marker is comprised of a printed word or words on a coloured background with a contrasting border and chevron to show direction of flow.

**Marker Colours:** The legend and background colours of a pipe marker are determined by the pipe's contents and are specified according to the tables on this page and on pages 98-99.



**Colours:** Additional information about the contents of a pipe is communicated through the use of supplementary warning colours (outlined in the table on page 101). Supplementary colours are sold separately as a wrap-around "band", or can be printed on custom markers at the time of manufacture.

### ALKALIS / ACIDS (WHITE ON VIOLET)

Pipe Outside Diameter (O.D.)	Over 250mm O.D.*	Over 70mm O.D.	40mm - 70mm O.D.	Up to 40mm O.D. ▲	
Legend	Recommended Safety Signal†	HI-VIS 89x475mm	57x475mm	31x475mm	10x100mm
ACID	▨	-	890001	892001	842406
ALKALI	▨	-	890436	860037	-
ALUM SOLUTION	-	-	891823	893824	842410
CAUSTIC	▨	-	879016	879216	842407
CAUSTIC POTASH SOLUTION	▨	-	830003	-	-
CAUSTIC SODA	▨	-	860101	862102	842408
CHEMICAL DOSING	▨	-	830004	830005	-
CHLORINE	-	-	890437	860038	-
CHLORINE SOLUTION	-	-	891824	893825	-
CITRIC ACID	-	-	843769	830007	-
CONCENTRATED CAUSTIC	▨	830011	-	830008	-
CYANIDE SOLUTION	▨	-	843770	830009	842409
DETERGENT	-	-	860102	862103	842411
DILUTE ACID	▨	830012	830013	830014	842412
DILUTE CAUSTIC	▨	830024	-	-	842413
FLOCCULANT	-	-	-	830131	842414
HYDRAZINE	▨	830025	891821	893822	-
HYDROCHLORIC ACID	▨	-	879044	879244	842415
LIME	-	-	830026	830027	842416
PHOSPHATE	-	-	860103	862104	-
PHOSPHORIC ACID	▨	-	890438	860039	-
POLYELECTROLYTE	-	-	-	830029	-
RECYCLED WATER	-	-	856845	856844	-
SODIUM HYDROXIDE	▨	-	890435	860036	842417
SULPHURIC ACID	▨	-	879683	879283	842418
WASTE WATER	-	-	856847	856846	-

### AIR (WHITE ON LIGHT BLUE)

Pipe Outside Diameter (O.D.)	Over 250mm O.D.*	Over 70mm O.D.	40mm - 70mm O.D.	Up to 40mm O.D. ▲	
Legend	Recommended Safety Signal†	HI-VIS 89x475mm	57x475mm	31x475mm	10x100mm
PLANT AIR	▨	-	890450	860051	842429
RETURN AIR	-	-	860104	862105	-
SERVICE AIR	▨	-	879173	879373	-
VACUUM	-	830154	860105	862106	842430
VACUUM AIR	-	-	890060	892061	-
VENT	-	830879	830155	830156	842431

### FIRE PROTECTION (WHITE ON RED)

BLANK	-	831122	890456	860057	-
CARBON DIOXIDE	-	830846	-	830523	842432
FIRE ALARM	-	-	830550	830833	-
FIRE FIGHTING WATER	-	-	890455	860056	842433
FIRE FOAM	-	-	890452	860053	842434
FIRE HOSE REEL	-	-	891829	893830	842435
FIRE HYDRANT	-	-	891827	893828	-
FIRE PROT. WATER	-	-	-	879358	-
FIRE SERVICE	-	-	891828	893829	-
FIRE SPRINKLERS	-	-	890453	860054	-
HALON	-	830834	830835	830837	-
HYDRANT WATER	-	-	-	860055	842436

### ELECTRICAL (WHITE ON ORANGE)

BLANK	-	831119	-	831121	-
CONSUMER'S MAINS	▨	-	-	842437	-
ELECTRIC TRACED	▨	-	831200	831201	-
ELECTRICAL	▨	-	830052	830051	842438
EMERGENCY LIGHTING	▨	830519	-	-	842439
SUB-MAINS	▨	830520	-	-	842440

\*\* 10mm legend height: legend repeats 50 times on a 100 x 500mm strip.

▲ Legend repeats 13 times on a 100 x 200mm strip. Either cut off individual markers manually, or wrap entire 100 x 200mm sheet around a pipe for maximum adhesion. Each legend measures 10 x 100mm.

† Supplementary safety markers are shown as a guide only and are not printed on markers. See page 101 for full range.

\* High-Visibility markers are recommended for pipes over 250mm O.D. or whenever the pipe must be viewed from a far distance.

Pipe Size Outside Diameter (O.D.)	Pipe Marker Size	Number of Pipe Markers
Up to 40mm O.D.	10 x 100mm (13 x Legend Per Sheet)	13/Sheet - 10 Sheets/Pack
40 to 70mm O.D.	31 x 475mm	10/Pack
Over 70mm O.D.	57 x 475mm	10/Pack
Over 250mm O.D.	89 x 475mm	10/Pack
Medical Gases	10 x 100mm (50 x Legend Per Sheet)	50/Sheet - 10 Sheets/Pack

### AIR (WHITE ON LIGHT BLUE)

AIR	-	890448	860049	-
AIR EXTRACTION	-	830034	843780	-
AIR SCOUR	-	830036	843782	-
AIR VENT	▨	890449	860050	-
BREATHING AIR	▨	-	892004	-
COMPRESSED AIR	-	830040	877275	877277
DRY COMPRESSED AIR	▨	-	830044	-
GENERAL PURPOSE AIR	-	-	830046	-
H.P. INSTRUMENT AIR	▨	830048	-	842423
HIGH PRESSURE AIR	-	-	879117	879317
INSTRUMENT AIR	▨	830050	-	892006
L.P. INSTRUMENT AIR	-	830085	-	-
LOW PRESSURE AIR	▨	-	879114	879314
MALE AMENITIES EXHAUST	-	-	830114	-
MEDICAL AIR	-	877292	-	877294
MEDICAL BREATHING AIR	-	-	-	842427
MEDICAL SUCTION	▨	-	-	830148

Larger sizes available on request.



## SELF-STICKING VINYL PIPE MARKERS

Factory applied industrial grade adhesives simplify marker installation. Simply peel the release coated paper backing from the marker and press the marker in place. Banding each end of the marker with Arrow Tape (see page 101) is recommended to indicate contents flow direction and to secure markers to the pipe.

### SELF-STICKING VINYL

Premium indoor/outdoor grade self-sticking marker. Weather resistant inks provide 5-8 years performance.

All Markers Listed Comply With AS 1345-1995

#### GASES (BLACK ON SAND)

Pipe Outside Diameter (O.D.)	Over 250mm O.D.*	Over 70mm O.D.	40mm - 70mm O.D.	Up to 40mm O.D. ▲	
<b>Legend</b>	<b>Recommended Safety Signal†</b>	<b>HI-VIS 89x475mm</b>	<b>57x475mm</b>	<b>31x475mm</b>	<b>10x100mm</b>
BLANK	-	830842	890429	860030	-
ACETYLENE	▬▬▬▬▬▬	830838	-	860021	-
AMMONIA	-	830840	879005	879205	-
ARGON	-	-	-	860022	842441
CARBON DIOXIDE	▬▬▬▬▬▬	-	879014	879214	842442
CARBON MONOXIDE	▬▬▬▬▬▬	-	860106	862107	-
EXHAUST	-	-	890423	860024	-
FREON	▬▬▬▬▬▬	-	890427	860028	-
GAS	-	-	893114	893117	-
GASEOUS AMMONIA	▬▬▬▬▬▬	830850	891811	893812	842443
GASEOUS CHLORINE	▬▬▬▬▬▬	-	-	893813	-
GASEOUS NITROGEN	-	830852	891812	893814	842444
GASEOUS OXYGEN	▬▬▬▬▬▬	830853	891817	893018	842445
HELIUM	-	-	890424	860025	842446
HYDROGEN	-	-	890036	-	842447
L.P. GAS	-	-	879034	879234	842452
LIQUID AMMONIA	▬▬▬▬▬▬	-	891814	893815	842448
LIQUID CHLORINE	▬▬▬▬▬▬	-	891815	893816	842449
LIQUID NITROGEN	▬▬▬▬▬▬	-	879015	879215	842450
LIQUID OXYGEN	▬▬▬▬▬▬	-	-	-	842451
MEDICAL OXYGEN	▬▬▬▬▬▬	-	830861	-	842453
NATURAL GAS	▬▬▬▬▬▬	830863	879036	879236	842454
NATURAL GAS Kpa	▬▬▬▬▬▬	-	891810	893811	842455
NATURAL GAS 100 Kpa	▬▬▬▬▬▬	-	860107	862108	-
NITROGEN	-	-	860127	862128	-
NITROUS OXIDE	▬▬▬▬▬▬	830864	890425	860026	842456
OXYGEN	-	-	879071	893151	-
PROPANE GAS	▬▬▬▬▬▬	-	890426	860027	-
RECIRCULATING GAS	▬▬▬▬▬▬	-	830866	830867	-
REFRIGERANT	▬▬▬▬▬▬	830868	890428	860029	842457
SLUDGE GAS	▬▬▬▬▬▬	-	830875	-	-
VENT	▬▬▬▬▬▬	-	830880	830881	-

#### MISCELLANEOUS (WHITE ON BLACK)

Pipe Outside Diameter (O.D.)	Over 250mm O.D.*	Over 70mm O.D.	40mm - 70mm O.D.	Up to 40mm O.D. ▲	
<b>Legend</b>	<b>Recommended Safety Signal†</b>	<b>HI-VIS 89x475mm</b>	<b>57x475mm</b>	<b>31x475mm</b>	<b>10x100mm</b>
BEER	-	-	-	830886	-
BILGE	-	-	-	830889	-
BRINE	-	-	860110	862111	-
DIGESTED SLUDGE	-	-	830891	843773	-
DRAIN	-	-	879369	893101	842460
EFFLUENT	-	-	860111	862112	-
LAB WASTE	-	-	890432	860033	-
PRODUCT	-	-	-	830895	-
PUMPED DRAINAGE	-	-	830897	-	-
RADIOACTIVE WASTE	☠	-	-	830898	842461
RAW GREEN LIQUOR	-	-	830899	-	-
RECIRCULATED SLUDGE	-	-	830903	-	-



Supplementary marker bands communicate additional information... sold separately on pg.101

#### STANDARD PACKAGE: 1

#### MISCELLANEOUS (WHITE ON BLACK)

Pipe Outside Diameter (O.D.)	Over 250mm O.D.*	Over 70mm O.D.	40mm - 70mm O.D.	Up to 40mm O.D. ▲	
<b>Legend</b>	<b>Recommended Safety Signal†</b>	<b>HI-VIS 89x475mm</b>	<b>57x475mm</b>	<b>31x475mm</b>	<b>10x100mm</b>
DIGESTED SLUDGE	-	-	830891	843773	-
RECLAIMED EFFLUENT	-	-	830904	830453	-
SEWAGE	-	-	860126	862127	-
SEWERAGE	-	-	891818	893819	-
SLUDGE	-	-	879660	876674	-
SLUDGE TRANSFER	-	-	830908	830909	-
SLURRY	-	-	834663	843776	-
SOIL	-	-	890430	860031	-
SOIL VENT	-	-	890431	860032	-
SUPERNATANT	-	-	891819	893820	-
THICKENED SLUDGE	-	-	830913	-	-
TRADE WASTE	-	-	860100	862101	-
VENT	-	-	893193	893196	-
WASTE	-	-	879634	879734	-
WASTE ACTIVATED	-	-	830914	-	-

#### OILS (WHITE ON BROWN)

Pipe Outside Diameter (O.D.)	Over 250mm O.D.*	Over 70mm O.D.	40mm - 70mm O.D.	Up to 40mm O.D. ▲	
<b>Legend</b>	<b>Recommended Safety Signal†</b>	<b>HI-VIS 89x475mm</b>	<b>57x475mm</b>	<b>31x475mm</b>	<b>10x100mm</b>
BLANK	-	-	-	860048	-
ALCOHOL	-	-	890007	892008	-
DIESEL FUEL	-	-	830917	843778	-
DIESEL OIL	-	-	879352	879932	-
ENGINE OIL	-	-	830919	830920	-
FUEL OIL	-	-	879059	879259	-
FUEL OIL SUPPLY	-	-	877543	877545	-
GOVERNOR OIL	-	-	-	830922	-
GREASE	-	-	890446	860047	-
HOT OIL	-	-	890443	860044	842474
HYDRAULIC FLUID	-	-	830923	830924	-
HYDRAULIC OIL	-	-	891830	893831	-
INHIBITED KEROSENE	-	-	830925	830926	-
INSUL OIL CLEAN	-	-	891825	-	-
LUBRICATING OIL	-	-	830134	830133	842475
OIL	-	-	890442	860043	-
WASTE OIL	-	-	830650	830649	-
WHITE SPIRIT	-	-	860109	862110	-

Larger sizes available on request.

▲ Legend repeats 13 times on a 100 x 200mm strip. Either cut off individual markers manually, or wrap entire 100 x 200mm sheet around a pipe for maximum adhesion. Each legend measures 10 x 100mm.

† Supplementary safety markers are shown as a guide only and are not printed on markers. See page 101 for full range.

\* High-Visibility markers are recommended for pipes over 250mm O.D. or whenever the pipe must be viewed from a far distance.

For larger jobs see our roll form pipe markers on page 101.

# SELF-STICKING VINYL PIPE MARKERS

## STEAM (BLACK ON SILVER-GREY)

Pipe Outside Diameter (O.D.)	Over 250mm O.D.*	Over 70mm O.D.	40mm - 70mm O.D.	Up to 40mm O.D. ▲	
<b>Legend</b>	<b>Recommended Safety Signal<sup>†</sup></b>	<b>HI-VIS 89x475mm</b>	<b>57x475mm</b>	<b>31x475mm</b>	<b>10x100mm</b>
BLANK		-	890434	860035	-
BLOW DOWN		-	890012	892013	-
BOILER FEED		-	890015	892016	-
EXHAUST		-	879561	836248	-
H.P. STEAM		-	890052	892053	842470
L.P. STEAM		-	890053	892054	842471
MAIN STEAM		-	-	830946	842472
SATURATED STEAM		-	860113	862114	-
SEALING STEAM		-	830947	843783	-
STEAM		830948	890050	892051	842473
STEAM CONDENSATE		-	860114	862115	-
STEAM DRAIN		830949	891820	893821	-
STEAM 920 Kpa		-	830951	-	-
STEAM 2900 Kpa		-	830952	-	-

## WATER (WHITE ON MID BLUE)

Pipe Outside Diameter (O.D.)	Over 250mm O.D.*	Over 70mm O.D.	40mm - 70mm O.D.	Up to 40mm O.D. ▲	
<b>Legend</b>	<b>Recommended Safety Signal<sup>†</sup></b>	<b>HI-VIS 89x475mm</b>	<b>57x475mm</b>	<b>31x475mm</b>	
POTABLE WATER**	-	-	890400	860001	-

\*\* NOTE: As per AS 1345, Potable Water should be a green marker with blue supplementary colour band. Blue marker is offered due to popular demand.

## WATER (WHITE ON JADE GREEN)

Pipe Outside Diameter (O.D.)	Over 250mm O.D.*	Over 70mm O.D.	40mm - 70mm O.D.	Up to 40mm O.D. ▲	
<b>Legend</b>	<b>Recommended Safety Signal<sup>†</sup></b>	<b>HI-VIS 89x475mm</b>	<b>57x475mm</b>	<b>31x475mm</b>	<b>10x100mm</b>
BLANK	-	-	876340	876336	-
ASH SLUICE WATER	-	-	830955	-	-
AUXILIARY	-	-	830956	830958	-
COOLING WATER	-	-	830957	830959	-
BACKWASH	-	-	879525	879527	-
BOILER FEED WATER	-	-	830130	830129	-
BORE WATER	-	-	860116	862117	-
BRINE	-	-	830964	-	-
CHILLED DRINKING WATER		-	830964	-	-
CHILLED WATER	-	-	879353	876998	842476
CIRCULATING WATER		830966	879130	879330	-
COLD WATER	-	830967	890067	892068	842477
COLD WATER FLOW	-	-	860131	862132	-
COLD WATER RETURN	-	-	860130	862131	-
CONDENSATE	-	830968	879094	879294	842478
CONDENSER WATER	-	-	879082	876671	842479
COOLING WATER	-	-	879148	879348	842480
DE-IONIZED WATER	-	-	830054	830053	-
DEMINERALISED WATER	-	830973	891808	893809	842481
DISTILLED WATER	-	830974	830975	830976	-
DOM. COLD WATER	-	-	860117	862118	-
DOM. HOT WATER		-	890072	892073	842482
DOMESTIC WATER	-	-	891809	883810	842483

## WATER (WHITE ON JADE GREEN)

Pipe Outside Diameter (O.D.)	Over 250mm O.D.*	Over 70mm O.D.	40mm - 70mm O.D.	Up to 40mm O.D. ▲	
<b>Legend</b>	<b>Recommended Safety Signal<sup>†</sup></b>	<b>HI-VIS 89x475mm</b>	<b>57x475mm</b>	<b>31x475mm</b>	<b>10x100mm</b>
DRAIN WATER	-	830977	830978	830979	842485
DRINKING WATER		-	860118	862119	-
EFFLUENT	-	-	830981	830982	842486
FEED WATER	-	-	830983	843779	-
FILTERED WATER	-	830984	890074	892075	842487
FRESH WATER	-	830992	830993	830994	842488
HEATING/COOLING WATER	-	-	-	-	-
HEATING HOT WATER	-	830997	830998	830999	-
HIGH PRESSURE HOT WATER		-	-	-	-
HIGH TEMPERATURE HOT WATER		831023	831024	831028	842490
HOT ABLUTION WATER	-	-	890076	892077	842491
HOT WATER		831030	890077	892078	842492
HOT WATER FLOW		-	860129	862130	-
HOT WATER RETURN	-	-	860128	862129	-
JACKET WATER	-	-	831031	-	-
LOW TEMP. HOT WATER		831033	891806	893807	-
MAINS WATER	-	-	838576	838575	842493
MAKE UP WATER		831034	831035	831036	-
NON POTABLE WATER		831037	879028	879228	842494
OVERFLOW	-	-	830055	830056	842495
POLLUTED WATER	-	831053	890401	860002	-
POTABLE WATER	-	831202	831203	831204	842496
PROCESS WATER	-	-	860120	862121	-
PURIFIED WATER	-	-	860121	862122	-
RAIN WATER	-	-	860122	862123	-
RAW WATER	-	-	879140	879340	842497
RETURN	-	-	890402	860003	851758
SALT WATER	-	-	860123	862124	-
SAMPLE WATER	-	-	-	830656	-
SCUPPERS	-	-	-	831054	-
SOFT WATER	-	-	860124	862125	-
SOLAR HOT WATER	-	-	-	831057	-
STORMWATER	-	-	879874	879876	-
SUMP WATER	-	-	831059	831060	-
SUPPLY	-	-	860043	860004	-
TOWNS MAIN WATER	-	831061	-	831063	-
TOWNS WATER	-	-	891807	893808	-
TREATED WATER	-	-	860125	862126	842498
WARM WATER	-	-	831066	831067	-
WASTE WATER	-	-	831068	831069	-
WATER	-	-	876661	893205	-

## MEDICAL GASES (COLOURS SPECIFIED BELOW)

MEDICAL BREATHING AIR		-	860500**	WHITE ON BLACK
MEDICAL NITROUS OXIDE		-	860501**	WHITE ON BLUE
MEDICAL OXYGEN		-	860502**	BLACK ON WHITE
MEDICAL SUCTION		-	860503**	BLACK ON PRIMROSE
MEDICAL VACUUM	-	-	860504**	BLACK ON PRIMROSE
SPARE MEDICAL GAS	-	-	830883**	BLACK ON BISCUIT

## COMMUNICATIONS (BLACK ON WHITE)

BLANK	831116	831117	831118	-
DATA TRANSFER	-	-	830160	-
TELEPHONES	830489	-	830513	-

Larger sizes available on request.



All markers listed comply with AS 1345-1995 identification of the contents of pipes, conduits and ducts.



## ROLL FORM PIPE MARKERS

Roll Form Pipe Markers provide an economical solution for any pipe marking application. Printed on self-adhesive polypropylene, these economical markers are suitable for larger marking jobs on clean pipes. Markers come on a roll, paper backed and with perforated edges for easy flow indication.

Available in a select range of pipe marker legends, and as custom.

**STANDARD PACKAGE: Roll of 50 Markers and 50 Chevrons (Flow Indicators). Roll length 19m (Approx).**

Pipe Size Outside Diameter	Pipe Marker Size (H x W)	
40mm to 70mm	31 x 380mm	

For supplementary safety markers, see page 101.

### ALKALIS / ACIDS (WHITE ON VIOLET)

Pipe Outside Diameter (O.D.) 40mm to 70mm O.D.		
Legend	Recommended Safety Signal†	380mm x 31mm
CAUSTIC SODA		846907

### AIR (WHITE ON LIGHT BLUE)

Pipe Outside Diameter (O.D.) 40mm to 70mm O.D.		
Legend	Recommended Safety Signal†	380mm x 31mm
AIR		846909
COMPRESSED AIR		846911
HIGH PRESSURE AIR		846910
INSTRUMENT AIR		846912

### WATER (WHITE ON MID BLUE)

Pipe Outside Diameter (O.D.) 40mm to 70mm O.D.		
Legend	Recommended Safety Signal†	380mm x 31mm
POTABLE WATER**	-	846939

\*\* NOTE: As per AS 1345, Potable Water should be a green marker with blue supplementary colour band. Blue marker is offered due to popular demand.

### ELECTRICAL (WHITE ON ORANGE)

Legend	Recommended Safety Signal†	380mm x 31mm
ELECTRICAL		846936



All wording/colour combinations listed are "Standard" markers and conform to Australian Standards

### WATER (WHITE ON JADE GREEN)

Pipe Outside Diameter (O.D.) 40mm to 70mm O.D.		
Legend	Recommended Safety Signal†	380mm x 31mm
CHILLED WATER	-	846913
COLD WATER	-	846914
CONDENSER WATER	-	846915
COOLING WATER	-	846916
DRAIN WATER	-	846917
HEATING HOT WATER	-	846918
HOT WATER	-	846919
NON POTABLE WATER	-	846920
POTABLE WATER		846921
PROCESS WATER	-	846922
RAIN WATER	-	846923
RAW WATER	-	846924
TOWNS WATER	-	846925
WATER	-	846926

### OILS (WHITE ON BROWN)

Pipe Outside Diameter (O.D.) 40mm to 70mm O.D.		
Legend	Recommended Safety Signal†	380mm x 31mm
FUEL OIL	-	846937
HYDRAULIC OIL	-	846938

### FIRE PROTECTION (WHITE ON RED)

Pipe Outside Diameter (O.D.) 40mm to 70mm O.D.		
Legend	Recommended Safety Signal†	380mm x 31mm
FIRE FIGHTING WATER	-	846935

\*\* 10mm legend height: legend repeats 50 times on a 100 x 500mm strip. Legend repeats 13 times on a 100 x 200mm strip. Either cut off individual markers manually, or wrap entire 100 x 200mm sheet around a pipe for maximum adhesion. Each legend measures 10 x 100mm.

† Supplementary safety markers are shown as a guide only and are not printed on markers. See page 101 for full range.

\* High-Visibility markers are recommended for pipes over 250mm O.D. or whenever the pipe must be viewed from a far distance.


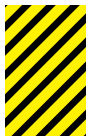
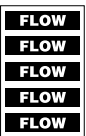






All wording/colour combinations listed are standard markers and comply to Australian Standards AS 1345-1995 & AS 2700-1996.



## SUPPLEMENTARY MARKERS

These supplementary safety markers are designed to communicate additional information about the contents of a pipe. Where marking pipes or ducts that contain materials for human consumption or wherever a special hazard to operators may be present, supplementary marking may be required to comply to AS1345-1995, Clause 8.1 and/or 8.2. Supplementary markers produced in "Bands" simply wrap around the pipe to provide 360° visibility of the signal colours. Alternatively, cut the band to your own length and get multiple "marks" from a single band. Made from self-adhesive outdoor vinyl.

	Materials For Human Consumption	Hazardous Materials	Radioactive Hazard	Biological Hazard	Fire Protection Material		
<b>STANDARD PACKAGE: 1</b>							
<b>Size</b>	75x800mm	75x800mm	75x800mm	75x800mm	75x800mm	75x800mm	75x800mm
<b>Qty</b>	10	10	10	10	10	10	10
<b>Mat'l</b>	SS	SS	SS	SS	SS	SS	SS
	<b>833430</b>	<b>833378</b>	<b>833381</b>	<b>833384</b>	<b>833387</b>	<b>833390</b>	<b>833427</b>
	25x200mm	25x200mm	25x200mm	25x200mm	25x200mm	25x200mm	25x200mm
	<b>833428</b>	<b>833376</b>	<b>833379</b>	<b>833382</b>	<b>833385</b>	<b>833388</b>	<b>833391</b>

## PIPE BANDING TAPES

### Pipe Banding Tape (B-946)

Solid colour. Ideal companion to your pipe markers.

### Arrow Tape (B-946)

Specially formulated to withstand the elements. Use outdoors or indoors with vinyl pipe markers.

Solid colour or arrow pipe banding tape provides 360° pipe colour code visibility, improving operational safety and plant efficiency.



### Roll Calculation Guide

Pipe Diameter	Colour Bands Per Roll
25mm	260
50mm	150
75mm	100
100mm	80
125mm	60
150mm	50
175mm	40
200mm	35
225mm	30
250mm	30

### STANDARD PACKAGE: 1

Roll Size	Part No.											
	Yellow	Green	Red	Blue	Orange	White	Brown	Black	Grey	Purple	Clear	
25mm x 27m	36301	36304	36302	36303	91428	91429	36305	36306	36307	36308	36309	
50mm x 27m	55260	55263	55261	55262	91430	91431	36310	36311	36312	36313	36314	
100mm x 27m	36287	36290	36288	36289	91432	91433	36315	36316	36317	36318	36319	

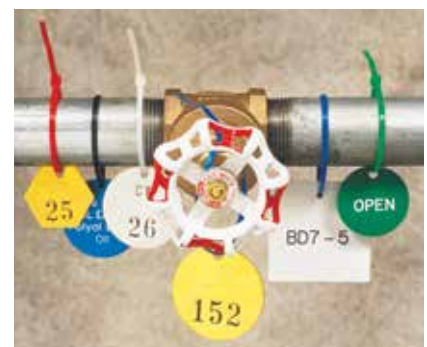
Roll Size	Part No.						
	Black/Yellow	White/Green	White/Red	White/Blue	Black/White	Black/Orange	Black/Grey
25mm x 27m	91424	91425	91426	91427	91413	91414	91415
50mm x 27m	91420	91421	91422	91423	91417	91418	91419
100mm x 27m	91287	91290	91288	91289	91409	91410	91411

## NYLON TIES

One piece nylon tie provides easy fastening of valve tags without tools. 200mm in length and ties can be hooked together if longer lengths are required. Non-corrosive 100% nylon. Operating temperatures from -40°C to +85°C.

### STANDARD PACKAGE: 100 Identical Ties

Part No.	Colour
43356	Black
43357	Blue
43361	Purple
873044	Red
43363	Yellow



Easy fastening without any tools.

## METAL WRITE-ON TAGS

Available in a variety of colours to help classify and identify. Write your own wordings using most marking pens. The durable metal can be bent and straightened without cracking. Tags are 76 x 127mm with a 6mm hole. Fix with nylon ties.

### STANDARD PACKAGE: 1

Part No.	Colour
848778	Yellow
848777	White
848779	Red
852335	Grey
848808	Orange



## BLANK METAL VALVE TAGS

Available in Brass, Stainless Steel and Aluminium. Blank for self-engraving/stamping.

### STANDARD PACKAGE: 25 TAGS

Part No.	Size	Material	Shape	B
23210	38mm	Brass	Round	
23212	38mm	Brass	Square	
23211	51mm	Brass	Round	
23213	51mm	Brass	Square	
44400	38mm	Stainless Steel	Round	
44401	38mm	Stainless Steel	Square	
44402	51mm	Stainless Steel	Round	
44403	51mm	Stainless Steel	Square	
848686	38mm	Aluminium	Round	
861758	38mm	Aluminium	Square	
861759	51mm	Aluminium	Round	
848738	51mm	Aluminium	Square	
860314	114mm	Brass	Bead Chain	
849049	114mm	Nickel	Bead Chain	



## BLANK PLASTIC VALVE TAGS

Easy to write on vinyl. Rectangular tags measure 65 x 90mm. Round tags are 75mm in diameter.

### STANDARD PACKAGE: 25 TAGS

Colour	Part No.	Description	Part No.	Description	B
Red	46977	Rectangular Tag	46981	Round Tag	
Yellow	46978	Rectangular Tag	46982	Round Tag	
Green	46976	Rectangular Tag	46984	Round Tag	
White	46980	Rectangular Tag	46986	Round Tag	
Blue	46975	Rectangular Tag	46983	Round Tag	
Orange	46979	Rectangular Tag	46985	Round Tag	



## CUSTOM VALVE TAGS

Brass, Aluminium and Stainless Steel Tags are custom engraved to your specifications. Aluminium and Brass Tags can be colour-filled if desired (Black, Blue, Red or White). Aluminium Tags are also available in colour-coded anodised, custom laser-etched for enhanced visibility.

All tags are available in 38mm and 51mm, Round and Square. Colour-coded Aluminium Tags are available in Black, Dark Blue, Green, Gold, Light Blue, Olive, Orange, Pink, Red, Violet and Yellow, with contrasting wording.

Our custom Plastic Tags are engraved on a flexible, stain-resistant multi-layered acrylic material. The tags are durable and long-lasting. 7 colours available Black, Blue, Brown, Green, Red, White and Yellow (Note: Yellow and White tags come stock with Black text).

Tag Size	Type	Max No. Characters/Line
38mm	Round	8
38mm	Square	12
51mm	Round	10
51mm	Square	16

Tag Material	Temperature Limit
Laser-Etched Coloured Aluminium (Anodised)	120°C
Engraved Brass	650°C
Engraved Aluminium (non-coloured)	815°C
Engraved Stainless Steel	1480°C
Engraved Acrylic	66°C



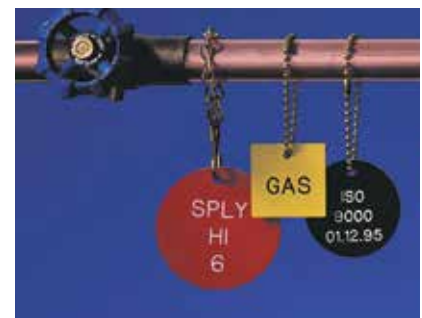
Engraved Brass.



Engraved Stainless Steel.



Laser Etched Anodised Aluminium (Coloured).



Engraved Acrylic (Coloured).