



C20

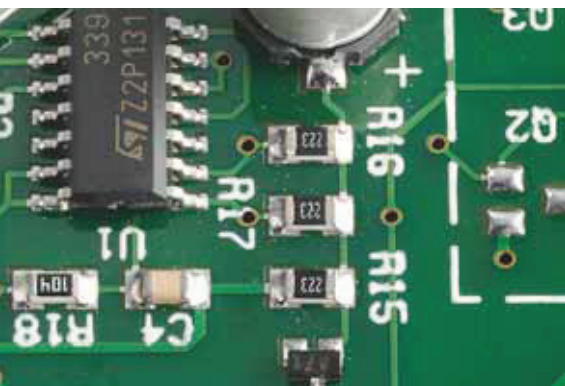
Chain actuator – Thrust force 300N – Max stroke 360 mm

ELLISCO > +64 9 570 5267
> info@ellis.co.nz
> www.ellis.co.nz

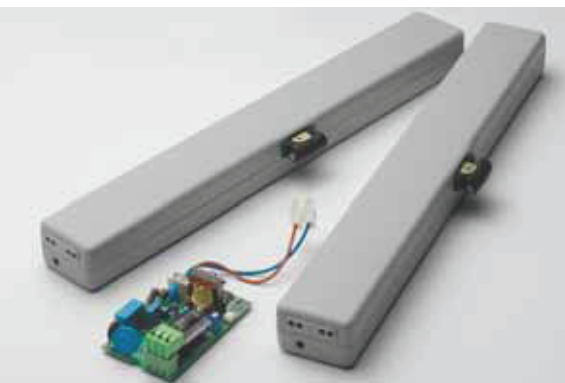
Double link chain with very high resistance on top loads.



High stroke, together with a reduced size of the actuator, to allow applications that require minimum size (international patent on the chain path).



End of stroke on closing by current absorption, to avoid adjustments on closing and possible positioning errors of the actuator.



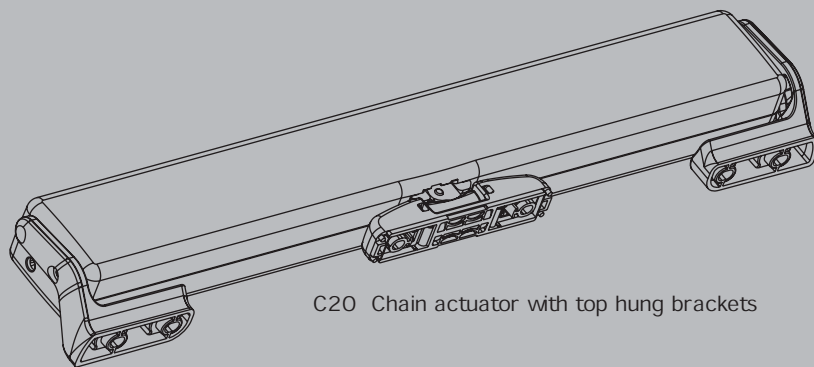
Tandem connection available, both at 230 V and 24 V, when 2 push points are requested on the same frame.

C20 TOPP
movement technologies

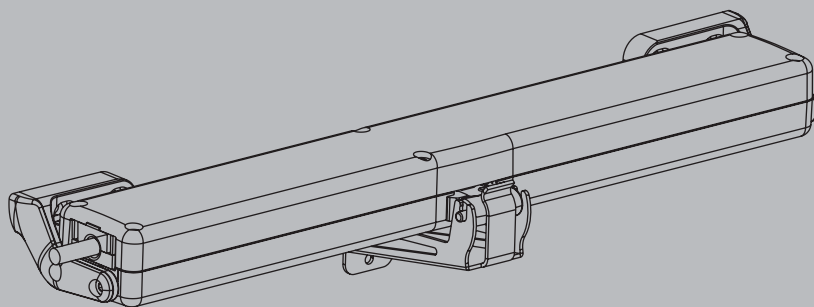
5

Fast hooking and unhooking system of the chain to the window (international patent).

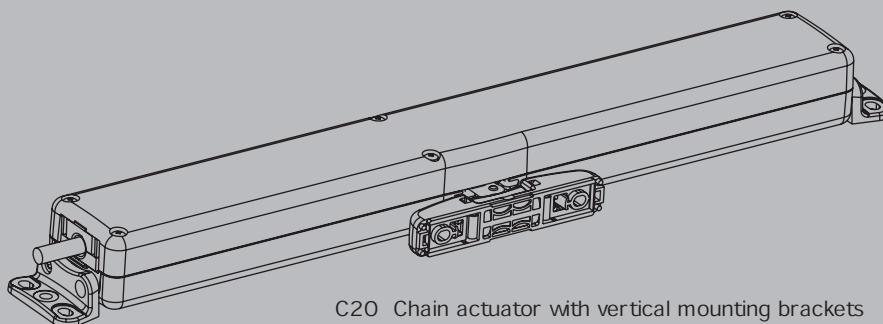




C20 Chain actuator with top hung brackets



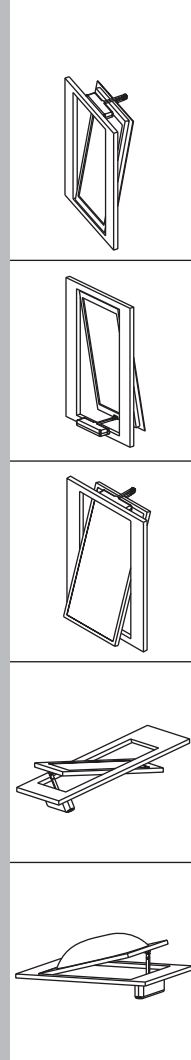
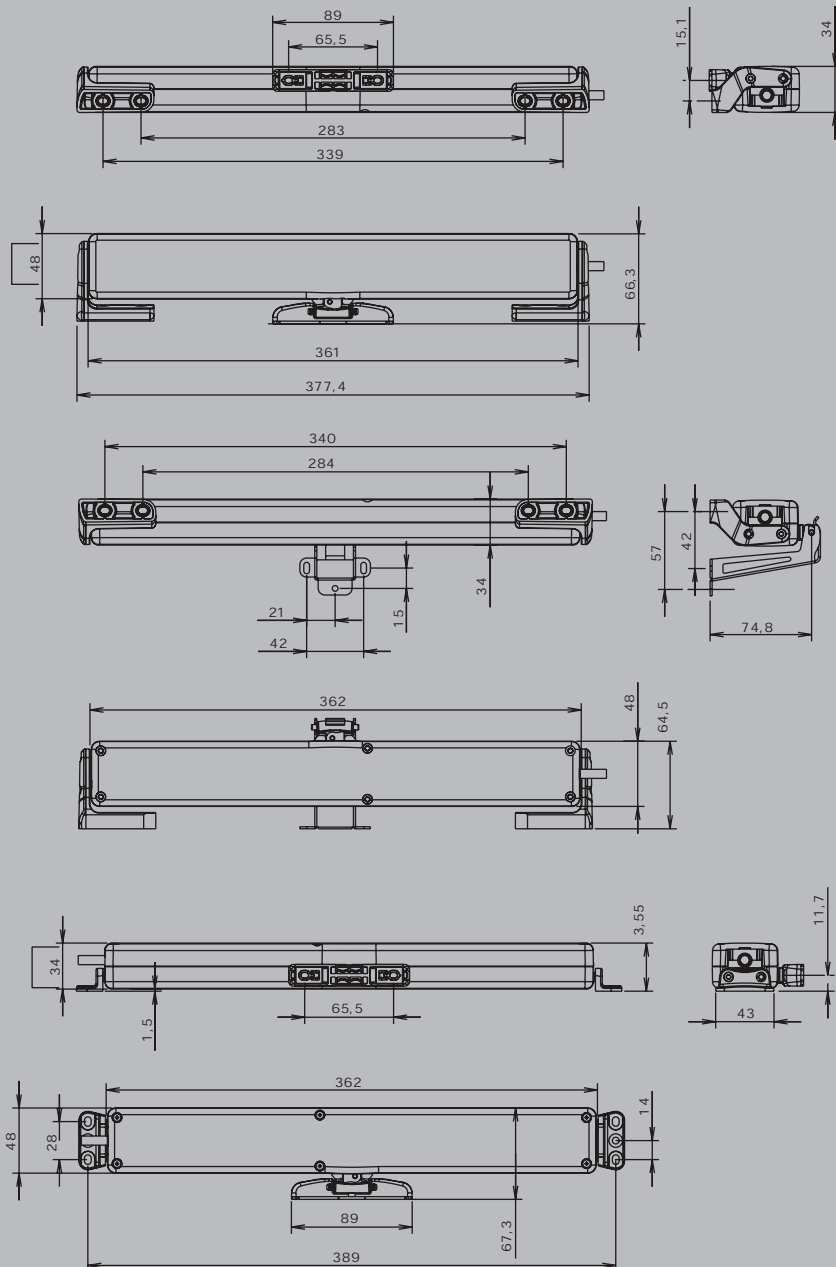
C20 Chain actuator with bottom hung brackets



C20 Chain actuator with vertical mounting brackets

Technical specifications

	C20/ 230	C20/ 24
Power supply voltage	230 V~50 Hz	min. 21 V -max 28 V d.c.
Max recommended load in thrust		300 N
Max recommended load in traction		200 N
Strokes		240 and 360 mm
Absorbed current	0,12 A	0,43 A
Idle translation speed	8 mm/ s	7,5 mm/ s
Duration of the idle stroke	46 s	48 s
Double electric insulation	yes	-
Service type		S2 of 4 min.
Operating temperature		-5 +50 °C
Protection degree of electric devices		IP 30
Stroke end regulation in closing		not necessary
Connection of two or more actuators in parallel		yes
Stroke end	electronic in opening - by amperometric absorption in closing	
Dimensions		362x48x34 mm
Weight*	0,970 kg	0,940 kg
* the weight indicated in the table may vary according to the chosen accessories		



Description for technical specifications

Electric actuator TOPP, model C20 with double link articulated chain,
contained in a suitable casing, complete with support and fitting accessories for top and
bottom hung windows. Operation at 230 V~50 Hz or,
as an alternative, at 24 V d.c. Maximum applicable load 300 N.
Rapid hooking system for the adjustment to the frame.
Stroke adjustable at 240 and 360 mm by an external selector.
CE marked device.

C20 TOPP
movement technologies

7