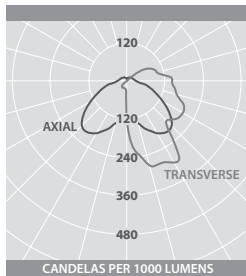


PASSLIGHT

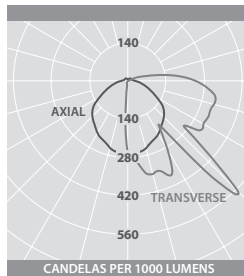


PHOTOMETRIC GUIDE



LED VERSION - POLYCARBONATE COVER

Luminaire Lumen Output:
24W = 2335lm
38W = 3165lm



LED VERSION - GLASS COVER

Luminaire Lumen Output:
24W = 2535lm
38W = 3440lm

ACCESSORIES

DESCRIPTION	CAT. No.
Steel wire guard (<i>black nylon coated</i>)	WG 6237
Tamper-resistant screw kit	SCR 6758
Key for tamper-resistant screws	KEY 6759

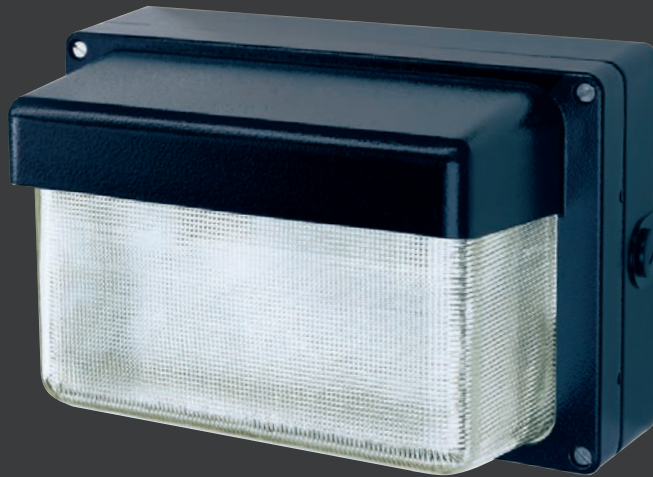


Wire guard



LED retro-fit gear tray

ELLISCO > +64 9 570 5267
> info@ellis.co.nz
> www.ellis.co.nz



CORROSION RESISTANT WALL MOUNTED LUMINAIRES WITH DOWNWARD LIGHT DISTRIBUTION



SPECIFICATION

- Body and frame in strong pressure die-cast LM6M high corrosion resistance aluminium. Textured black full polyester powder finish
- Cover frame retained on two stainless steel safety chains
- Covers in prismatic polycarbonate or 9mm thick (nominal) thermally shock resistant borosilicate glass
- Fixings outside gasket line to preserve IP rating
- Clip-on nylon coated steel wire guard available
- Tamper-resistant cover screws available
- Complies with M.O.D. JSP482 Chapter 8 Document for 'Category C' areas (up to 70W)
- High power white LEDs
- Aluminium gear tray with LED heat sink bar
- Fitted with 4000K LEDs

LED CHARACTERISTICS

CRI	70
COLOUR TEMPERATURE	4000K
RATED LIFE (HOURS)	100K - L90/B10
PROTECTION	LED PROTECT
DRIVER EFFICIENCY	>85%
REPLACEABLE	YES
POWER FACTOR	>0.95

LL/CW **93.9**

For LED characteristics explanation see www.thorlux.com.au/led-characteristics

RANGE

	LED	CAT. No.	APPROX. kg
GLASS COVER	24W	PL 14898L	6.6
	38W	PL 14900L	6.6
POLY. COVER	24W	PL 14897L	4.4
	38W	PL 14899L	4.4
LED RETRO-FIT GEAR TRAY	24W	PL 14930L	1.6
	38W	PL 14931L	1.6

CIRCUIT TYPE - L - non-dimming (LED)

DIMENSIONS

